
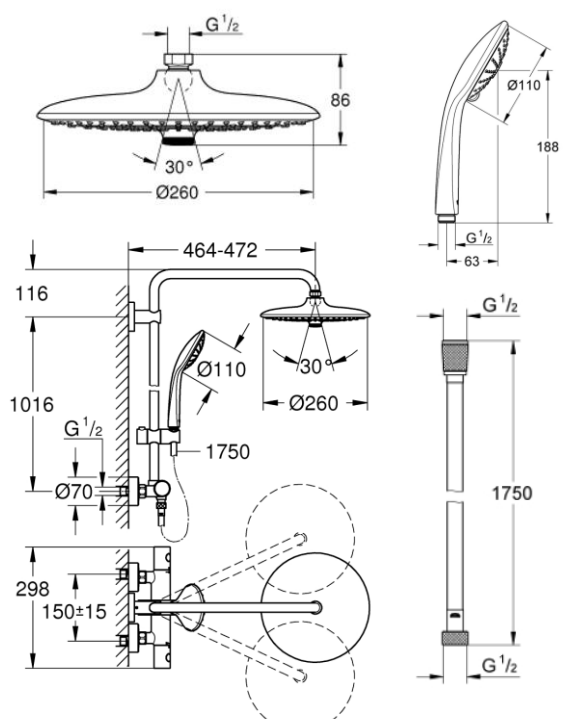




PROJECT		REF		REV	ITEM CODE	
LOCATION		DATE			PAGE	

## SANITARY WARE SPECIFICATION SHEET

Item Descriptions	GROHE (Germany) "Euphoria System 260" Wall-mounted shower system with thermostatic mixer; including showerhead (26455000) and hand shower (27221000); nominated flow rate <b>9 L/min</b> in <b>WELS Grade 1</b> ; Registration No. SB 19-0045	Illustration/ Drawing 
Dimensions	L472 x W298 x H1132 mm	
Model	27296002	
Finish	Chrome Plated	
Country of origin	Germany	
Manufacturer	GROHE Limited	
Supplier	Acme Sanitary Ware Co. Ltd Mr. Eric Wong/ Mr. Don Yuen (852) 2388-7171 / (852) 2710-8012	
Contact Tel/Fax	acme@acmesanitary.com.hk	
E-mail	www.acmesanitary.com.hk	
Website		
<p><b>"Euphoria System 260"</b> <b><u>Shower system with thermostat for wall mounting</u></b></p> <ul style="list-style-type: none"><li>Consisting of:</li><li>horizontal swivable 450 mm projection shower arm</li><li><b>exposed thermostatic shower</b> with Aquadimmer function</li><li>allows change between:</li><li>head shower Euphoria 260 (26 455 000)</li><li>3 spray patterns: Rain, SmartRain, Jet</li><li>with ball joint</li><li>rotation angle <math>\pm 15^\circ</math></li><li>hand shower Euphoria 110 Massage (27 221 000)</li><li>3 spray patterns: Rain, SmartRain, Massage</li><li>adjustable height via gliding element</li><li>Silverflex shower hose 1750 mm (28 388 000)</li><li><b>GROHE TurboStat</b> compact cartridge with wax thermoelement</li><li><b>GROHE SafeStop</b> safety button at <math>38^\circ\text{C}</math> ( <b>calibration required</b> )</li><li><b>GROHE SafeStop Plus</b> optional temperature limiter at <math>43^\circ\text{C}</math> included</li><li><b>GROHE DreamSpray</b> perfect spray pattern</li><li><b>GROHE StarLight</b> chrome finish</li><li><b>GROHE SprayDimmer</b> (Stepless flow rate reduction)</li><li><b>SpeedClean</b> anti-limescale system</li><li><b>Inner WaterGuide</b> for a longer life</li><li><b>Twistfree</b> preventing the hose from twisting</li><li>suitable for instantaneous heaters from 18 kW/h</li><li>minimum flow rate 7 l/min.</li><li>optional upgrade: <b>GROHE EasyReach</b> tray (26 362)</li></ul>		



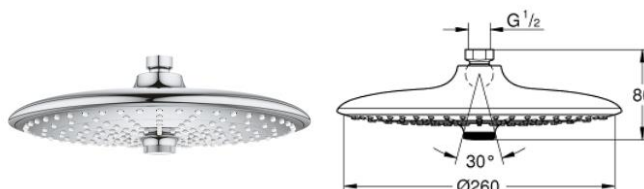
PROJECT		REF		REV	ITEM CODE	
LOCATION		DATE			PAGE	

## SANITARY WARE SPECIFICATION SHEET

26455000

### "Euphoria 260" Head shower 3 sprays

- Rain, SmartRain, Jet
- Ø 260 mm
- Ball joint +/- 15° rotatable
- connection thread 1/2"
- **GROHE DreamSpray** perfect spray pattern
- **GROHE StarLight** chrome finish
- **SpeedClean** anti-limescale system
- **Inner WaterGuide** for a longer life
- suitable for instantaneous heater



### GROHE Euphoria 260 SmartControl head shower – a perfect upgrade for your shower!

Add instant luxury to your bathroom with the GROHE Euphoria 260 SmartControl head shower, which comes with three distinctive spray zones to guarantee showering satisfaction. Jet Spray is powerful and focused, perfect for washing out shampoo and an invigorating head or neck massage. The SmartRain Spray is wider for an energizing yet relaxing experience and Rain Spray uses all the nozzles on the generous spray plate for full body coverage and a truly soothing shower. To choose the spray you want all you have to do is turn the innovative button in the centre of the impressive 260mm spray head. Simple! With its slim profile and timeless design, it looks perfect in a wide range of bathroom styles and is packed with GROHE technology. To deliver the most enjoyable shower possible GROHE DreamSpray ensures the flow from every nozzle will be just right – whichever spray zone you select. The dazzling scratch resistant GROHE StarLight chrome finish keeps its sparkle for a lifetime and limescale can be removed from the silicone SpeedClean nozzles with a simple wipe. It's easy to install, too, and the Inner WaterGuide prevents the surface from getting too hot to protect both sensitive skin and the chrome. The stylish GROHE Euphoria 260 SmartControl head shower – delivers everything from relaxation to revitalisation!





# Acme Sanitary Ware Co. Ltd.

1/F, Acme Building, 22-28 Nanking Street, Kowloon, Hong Kong  
Tel: 2388 7171 Fax: 2710 8012  
Email: acme@acmesanitary.com.hk  
Website: www.acmesanitary.com.hk



Pure Freude  
an Wasser

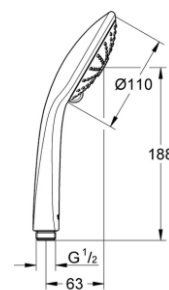
PROJECT		REF		REV	ITEM CODE	
LOCATION		DATE			PAGE	

## SANITARY WARE SPECIFICATION SHEET

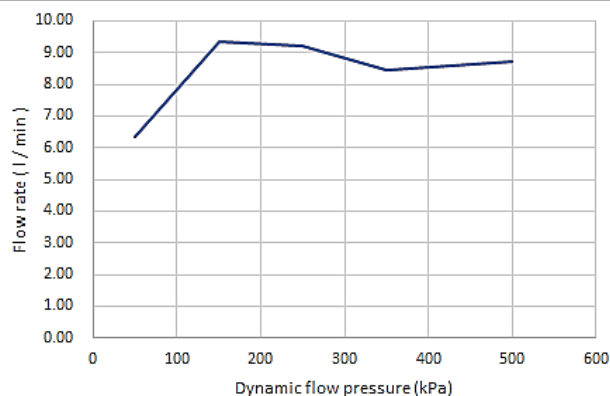
27221000

### "Euphoria 110 Massage" Hand shower 3 sprays

- Rain, Massage, SmartRain
- **GROHE SprayDimmer** (Stepless flow rate reduction)
- **GROHE StarLight** chrome finish
- **SpeedClean** anti-limescale system
- **Inner WaterGuide** for a longer life



Dynamic flow pressure (kPa)	50	150	250	350	500
Flow rate (l/min)	6.33	9.33	9.20	8.45	8.70



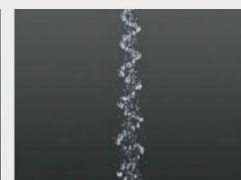
#### RAIN SPRAY

Wide and luxurious – a soft, delicate pattern to soothe the skin. Mimicking warm summer rain, the spray provides a full and even coverage.



#### SMARTRAIN SPRAY

All the features and benefits of our authentic Rain spray but with a reduced flow. A smart pattern that uses less water to deliver full showering enjoyment.



#### MASSAGE SPRAY

A pulsating spray pattern for a stimulating massage. Gives a unique and invigorating all-over massage.

28388000

### "Silverflex" Shower hose Twistfree 1750

- 1750 mm
- smooth surface for easy cleaning
- tensile strength 500 N
- pressure resistance up to 5 bar
- heat resistance 70°C
- AntiFold bendproof
- universal connection G 1/2" x 1/2"
- Rotation cone for **Twistfree** function
- **GROHE StarLight** chrome finish
- **blister packaging**







# Acme Sanitary Ware Co. Ltd.

1/F, Acme Building, 22-28 Nanking Street, Kowloon, Hong Kong  
Tel: 2388 7171 Fax: 2710 8012  
Email: acme@acmesanitary.com.hk  
Website: www.acmesanitary.com.hk



Pure Freude  
an Wasser

PROJECT		REF		REV	ITEM CODE	
LOCATION		DATE			PAGE	

## SANITARY WARE SPECIFICATION SHEET



### Constant water temperature thanks to reliable GROHE TurboStat technology

Our precise control technology ensures an instant water flow at the desired temperature and keeps it constant irrespective of any fluctuations in water pressure or supply.



### GROHE SafeStop (Plus) – double scalding protection at 38°C and (optional) 43°C

Great for homes with children, this safety feature is set at 38°C, preventing you from turning up the water temperature too high. If desired, higher temperatures can be selected by pushing the button. Optional for extra safety: the easy-to-fit GROHE SafeStop Plus limiter ensures that the temperature does not exceed 43°C.



### GROHE DreamSpray for luxurious showering

The GROHE DreamSpray technology turns your daily shower into a luxuriously relaxing experience. The advanced engineering of the shower head ensures a balanced flow of water from all nozzles, whatever spray pattern you choose.



### Easy to clean thanks to the GROHE StarLight chrome coating

Just wipe the tap down with a dry cloth – the ultra smooth surface finish is scratch resistant and ensures a lasting luminous sheen. You'll save plenty of time cleaning while your tap always looks shiny and new.



### SpeedClean: easy cleaning thanks to silicone nozzle

Indeed, the name says it all: with the SpeedClean technology, you'll have limescale removed from the spout in the blink of an eye thanks to a nozzle made of silicone. A quick wipe with your fingers is all it takes to remove any limescale deposits, saving you a lot of time and effort!



### Coating protected by Inner WaterGuide

A strong insulation of the water guide inside the shower prevents its surface from heating up, so it will never be too hot for you to touch. At the same time, this serves to protect the finish of your GROHE shower, further enhancing its great durability.



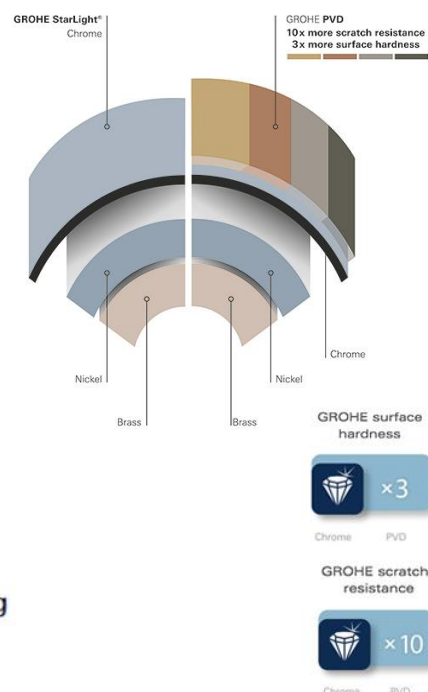
### TwistFree – prevents your shower hose from twisting

TwistFree shower hoses are inspired by everyday experience: ever had to struggle with a twisted shower hose? TwistFree keeps your shower hose flexible and in shape, saving you that trouble.



### GROHE EasyReach tray – always keep shower gel and shampoo handy

Always keep your shower gel and shampoo handy with the GROHE EasyReach tray. The flat tray surface is designed to match your tap for a great look and quick easy cleaning.

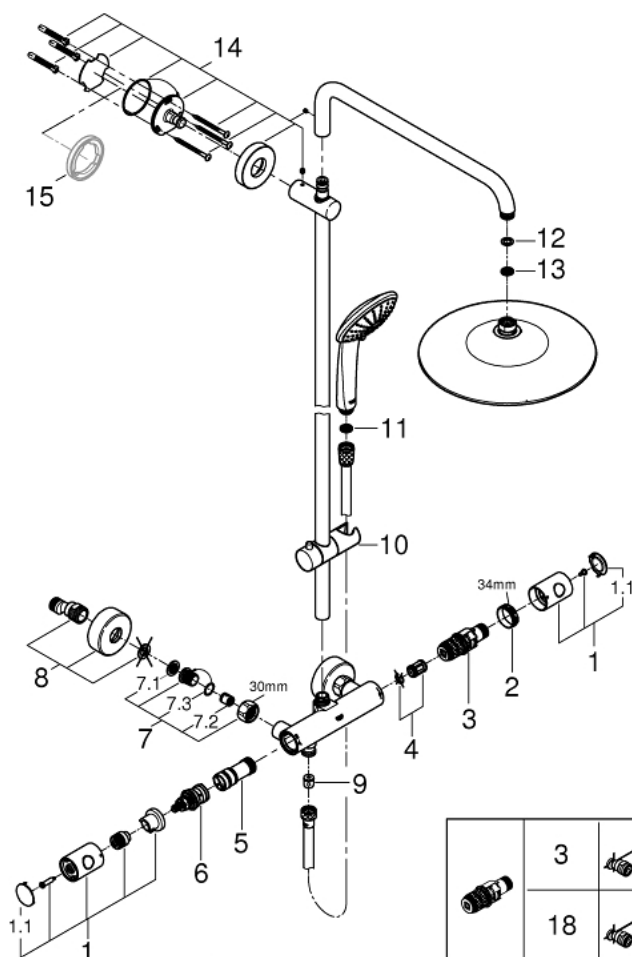


\* All information of the above is for the reference only. No prior notice is made if any changes.



PROJECT		REF		REV	ITEM CODE	
LOCATION		DATE			PAGE	

## SANITARY WARE SPECIFICATION SHEET



### SPARE PARTS

- 1: Metal handle 1/2" (Order-nr. 47984000)
- 1.1: Cover Cap (Order-nr. 6458500M)
- 2: retaining ring (Order-nr. 47743000)
- 3: Thermostatic compact cartridge 1/2" (Order-nr. 47439000)
- 4: Sound absorber (Order-nr. 47398000)
- 5: Water flow (Order-nr. 47751000)
- 6: Aquadimmer (Order-nr. 12433000)
- 7: Non-return valve (Order-nr. 47189000)
- 7.1: Filter (Order-nr. 0726400M)
- 7.2: Non-return valve (Order-nr. 08565000)
- 7.3: O-Ring Ø17 x Ø2 (Order-nr. 0305500M)
- 8: S-union (Order-nr. 12662000)
- 9: Non-return valve (Order-nr. 08565000)
- 10: Sliding piece (Order-nr. 12140000)
- 11: Strainer (Order-nr. 0700200M)
- 12: Fibre seal dia. Ø 18,5 x Ø 12 x 2 (Order-nr. 0138900M)
- 13: Strainer (Order-nr. 48007000)
- 14: Outlet shower holder (Order-nr. 48279000)
- 15: Spacer (Order-nr. 27180000)\*
- 16: Socket Spanner (Order-nr. 19332000)\*
- 17: Special Spanner (Order-nr. 19377000)\*
- 18: GROHE TurboStat cartridge 1/2" (Order-nr. 47175000)\*
- 19: Shower system pipe for retrofitting (Order-nr. 48053000)\*
- 20: Shower system pipe for retrofitting (Order-nr. 48054000)\*
- 21: Shower arm for shower systems (Order-nr. 14047000)\*

\* Optional accessories




自願參與用水效益標籤計劃 - 沐浴花灑  
Voluntary Water Efficiency Labelling Scheme - Showers for Bathing



茲證明  
This is to certify that

將下列花灑在本計劃內註冊：  
has registered the following shower under this scheme :

牌子 / Brand	:	GROHE
型號 / Model	:	27221XXX + 409374040 ("XXX" denotes colour variants)
原產地 / Country or Region Origin	:	Germany

在用水效益標籤上展示的標誌 <i>Symbolic Presentation on the Water Efficiency Label</i>	:	 滴水點 <i>Water droplet(s)</i>
用水效益級別 <i>Water Efficiency Grade</i>	:	1
耗水量 <i>Water Consumption</i>	:	9 公升/分鐘 <i>litres/minute</i>

簽發日期: 9 July 2019  
Date of Issue:



水務署  
Water Supplies Department



水務署署長(張業駒代行)  
for Director of Water Supplies





ies Department

告士打道七號入境事務大樓 48 樓

48/F, Immigration Tower, 7 Gloucester Road, Wan Chai, Hong Kong

本署檔號 : ( 2 ) in WSD 3321/2020 T/J(1606/2020)  
Our ref.  
來函檔號 :  
Your ref.

電話 :  
Tel.  
傳真 : 2824 0578  
Fax.

26 January 2021



**Approval of "GROHE" Thermostatic Mixer  
(General Acceptance No. C20210074)**

Your letter ref. WRC/2411 dated 7 December 2020 refers.

Having considered the test report ref. J25909 issued on 27 November 2020 by Nutek Systems (HK) Ltd., this Authority accepts that the fitting described below complies with, and its use when correctly installed does not contravene, the Waterworks Ordinance and Regulations.

**Name of Manufacturer:** Grohe AG

**Country of Origin:** Portugal

**Brand:** Grohe

**Details of Fitting:** 1/2" Wall mounted thermostatic shower mixer

**Model:** 27296XX2  
(where the digits "XX" denote the code of colour)

**Body Markings:** **GROHE**

**Expiry Date:** 5 October 2025



This Authority hereby permits the use of the above fitting in fresh water plumbing systems subject to full adherence to Waterworks installation requirements. In particular, you are required to draw your customers' attention to the following requirement-

"The cold water supply to the fitting shall be drawn from the same source that supplies the hot water apparatus so as to provide a balanced pressure and to obviate the risk of scalding in the event of a restriction or failure in the water supply." AND

"The shower head or handspray should not be placed in submerged conditions and should be securely fixed to the original position after use."

A condition of this acceptance is that the fitting to be installed shall be replicas of the sample as certified by the testing agent mentioned above and without modifications. This acceptance may be withdrawn at any time if the standard of the fitting installed fails to meet that of the approved sample or if the fitting is found to be unsuitable for use in fresh water plumbing systems.

This acceptance is only applicable to the main body of the fitting, unless otherwise specified.

For the use of the fitting in any project, the General Acceptance Number of this letter must be quoted as a means of identification of acceptance of the fitting by this Authority.

Should you have any enquiries, please contact our Engineer Mr. Terry KUNG at tel. no. 3583 4086.

Yours faithfully,

  
(CHAN Chung-kun)

for Director of Water Supplies

Encl.

c.c.      WSD 3321/1/82    ] - without catalogue  
             ME/MC            ] - with soft copy only